

New products 2014.

Breaking new ground with LED.

World of LED





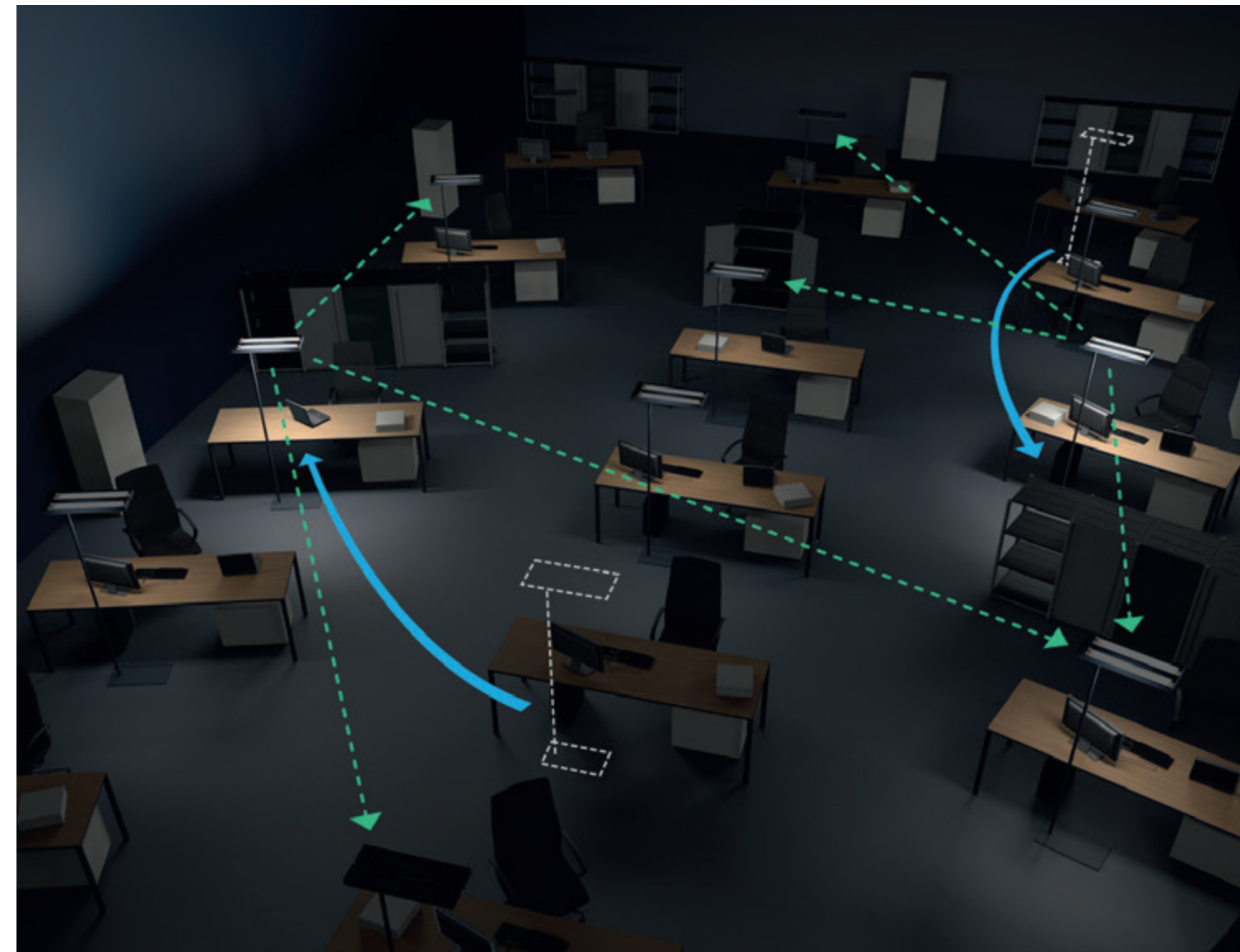
Regent Lighting

We work on your light.

Regent Lighting is based in Basel, Switzerland and has around 600 employees in seven countries. The family company, which was founded in 1908, has become a market leader in Switzerland, is one of the leading lighting manufacturers in Europe and present on an international scale via distribution channels and partners in 35 countries. With their well founded technical know-how and wide range of experience in lighting applications Regent's team of experts consult and advise lighting designers, architects, installers and end-users in their quest to find innovative lighting solutions. A large part of our business today involves LED technology.

Office

ALONEatWORK®	5
Tweak CLD LED	6/7
Item LED/Solo LED	8/9
Channel LED/Slash 2 LED	10/11
Flow LED/Tea LED	12/13
Echo LED/Echo Trimless LED	14/15
Rea LED / Zeis LED	16/17



ALONE at WORK®

Effortlessly creating the optimum atmosphere in the space.

As the working day comes to a close, workstations still occupied in open plan offices turn into solitary pools of light. People still working find it harder to concentrate, are easily distracted and less productive. Thanks to self-configuring wireless communication technology that can address all the luminaires within the office space the ALONEatWORK® system developed by Regent ensures a pleasant atmosphere and an inspiring working environment. All by itself, with optimised energy input, and without you having to raise a finger.

Set up and re-locate luminaires without programming effort

- autonomous intelligence
- automatic recognition and gauging of luminaires in the vicinity
- independent of luminaire location
- self-configuring wireless technology



Tweak CLD LED.

Free-standing luminaire for tomorrow's office landscapes today.

The first impression you have of the Tweak CLD LED free-standing luminaire is that it features pleasing, future-oriented design and is beautifully made. Only when you take a second, closer look do you begin to appreciate its true strengths – intuitive operating element **Slyder®**, **SensoDim®**, multifunctional interface, **ALONEatWORK®** communication technology and cutting-edge LED technology provide today's answers to the challenges of office landscapes of tomorrow. Tweak CLD LED blends in with practically any environment, gives light shape and form, and can be applied intuitively to enhance and enrich day-to-day work.

100lm/W

- intuitive operating element **Slyder®**
- direct/indirect components can be dimmed separately
- high-quality light thanks to micro-prismatic CLD optics
- electronic interface for integration into existing facility management concepts
- available with LEDs or for FSDH 28W compact fluorescent lamps



Mylights Technology finder

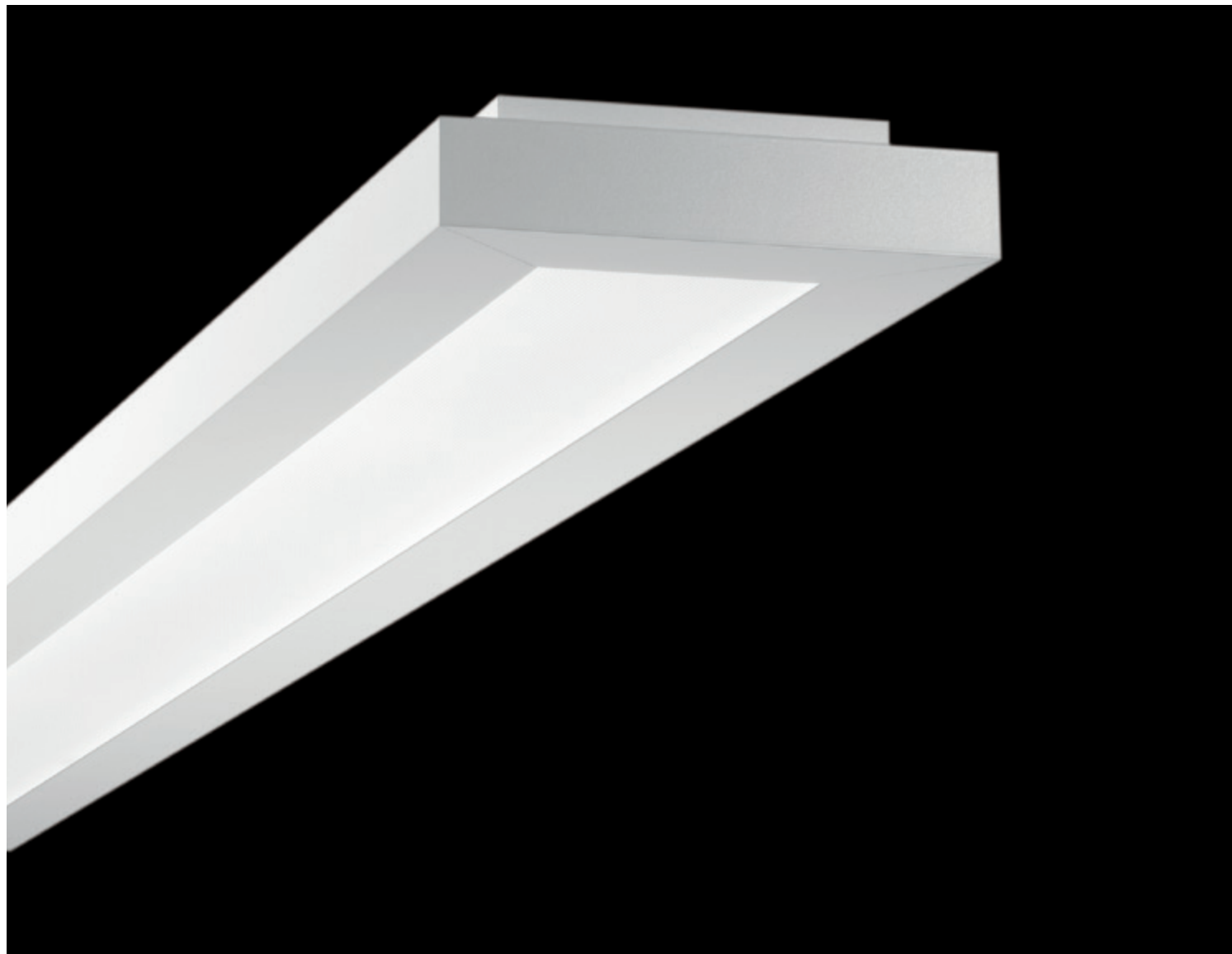
A world first
«Mylights
Technology»

Desk height adaptive control. «Mylights Technology adapt» enables the automatic adjustment of lighting at the workplace according to the selected desk height.

The luminaire will find you. Imagine a free-standing luminaire can adjust automatically to your lighting requirements when you occupy a specific workstation. A Tweak CLD LED free-standing luminaire equipped with new «Mylights Technology finder» does just that – it adapts to the lighting requirements entered in your smart phone and adjusts the lighting accordingly. Simply select the desk at which you would like to work, sit down and enjoy your personalised lighting.

HighLumen Single head luminaire. Multiple requirements demand flexible solutions. By increasing the luminous flux, this luminaire can meet even the most stringent of requirements in the office environment using highly efficient LED technology.

- optimum lighting conditions irrespective of the desk height thanks to «Mylights Technology adapt»
- personalised lighting even for flexible workstations
- save and use the personal settings
- simple and intuitive via your smart phone
- the luminaire adjusts automatically to your requirements



Item C-LED.

Focal glow revisited.

Whether meeting room or office space – the elegantly designed luminaires from the Item LED range lend themselves for application in any environment and enhance the overall impression of the space. But it is not only the outward appearance of this luminaire that is so convincing. Item comprises future-oriented LED technology that makes for high luminous efficiency, a service life of 50,000 hours and UGR values of up to UGR <13. And it is extremely maintenance-friendly. Item LED is sealed tight and the LED module can be replaced on site.

up to
95lm/W

- continuous lengths of up to 3 metres
- excellent lighting quality without shadows along the entire length
- multi-directional C-LED optics for excellent ergonomic quality; in line with EN 12464-1 regulations for the lighting of indoor workplaces
- UGR <13 for the pendant version and <19 for the surface-mounted version
- minimal maintenance and operating costs given that the LED luminaire is sealed
- LED module can be replaced on site

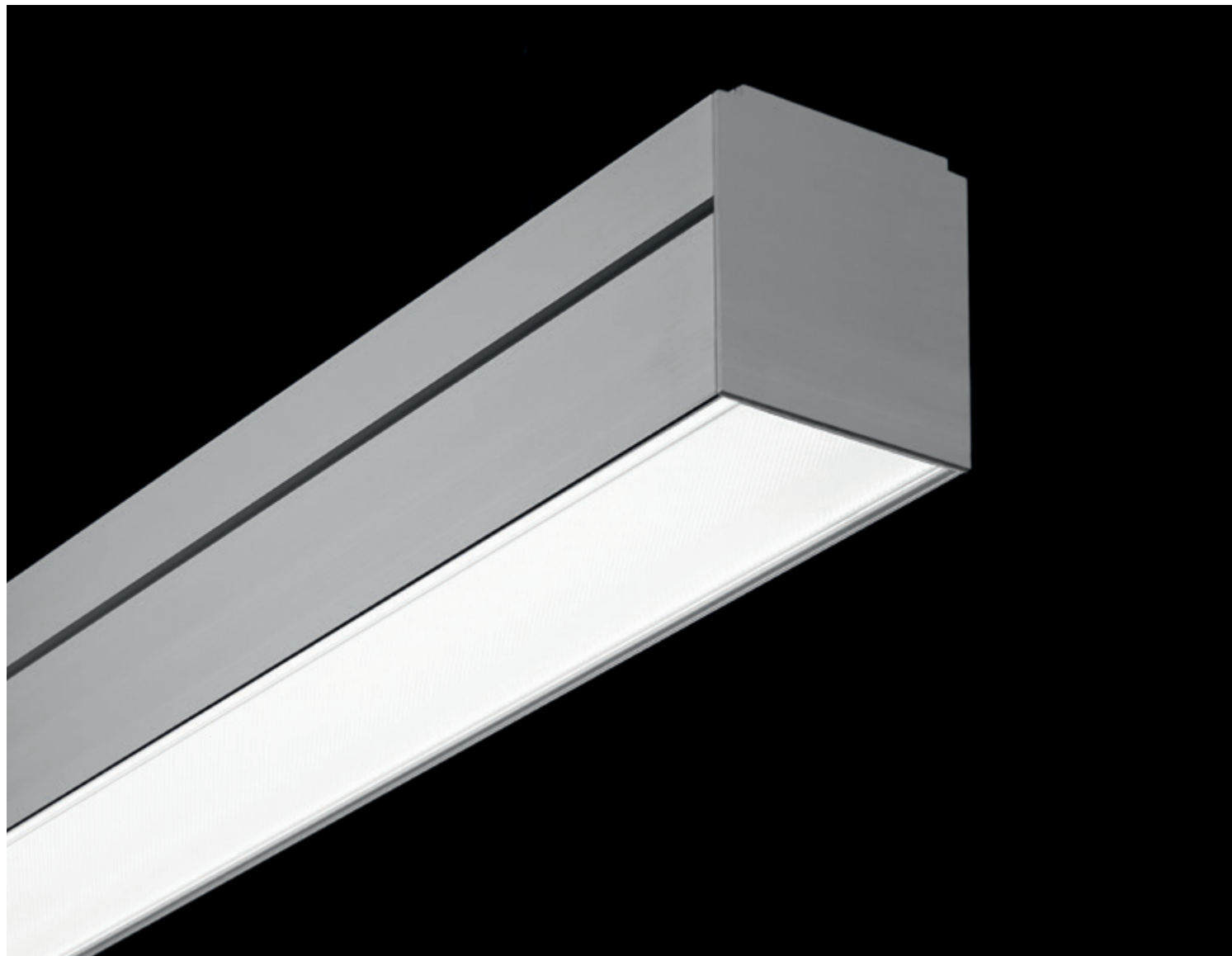
Solo LED.

An all-round success.

Solo LED achieves efficiency values today which would have been unimaginable just a short while ago – up to 114 lm/W. The luminaire is now available with diameters of 430, 530, 680 and 980mm and with a new cylindrical design. Should the LED module require replacing, this can be done quickly and easily on site.

up to
114lm/W

- energy savings of up to 50% vis-à-vis conventional T5 luminaires
- perfect uniform spread of light across the diffuser and clear formal language
- suitable for application in the office environment thanks to C-LED optics, multi-directional
- 54% lower investment required compared to T5 version
- available for recessed mounting with/without rim and for embedding in concrete, or for surface mounting



Channel LED.

Continuous row solutions using cutting-edge technology.

Channel LED knows almost no limits. This profile luminaire can be extended vertically or horizontally as required and can be fully or semi-recessed. Ideal for seamless continuous row mounting or linear effects. Even office illumination pursuant to EN 12464-1 can be realised using these profile luminaires. The combination of LEDs and C-LED light control elements make this possible. Thanks to its excellent photometric values and clear-cut design, the Channel LED range (ceiling-recessed or ceiling-mounted luminaires, continuous row mounting systems and pendant luminaires) can provide answers to the wide-ranging demands of the modern office environment.

up to
80lm/W

- shadow-free lines of light
- sanitised APD (Added Performance Diffuser); luminaire light output of up to 80lm/W (Channel LED)
- C-LED light-deflecting element UGR <19, Lmax > 65A, < 3000 cd /m²; luminaire light output of up to 70lm/W (Channel Office C-LED) complies with the latest office lighting standards
- improves energy efficiency by up to 40% compared to T5



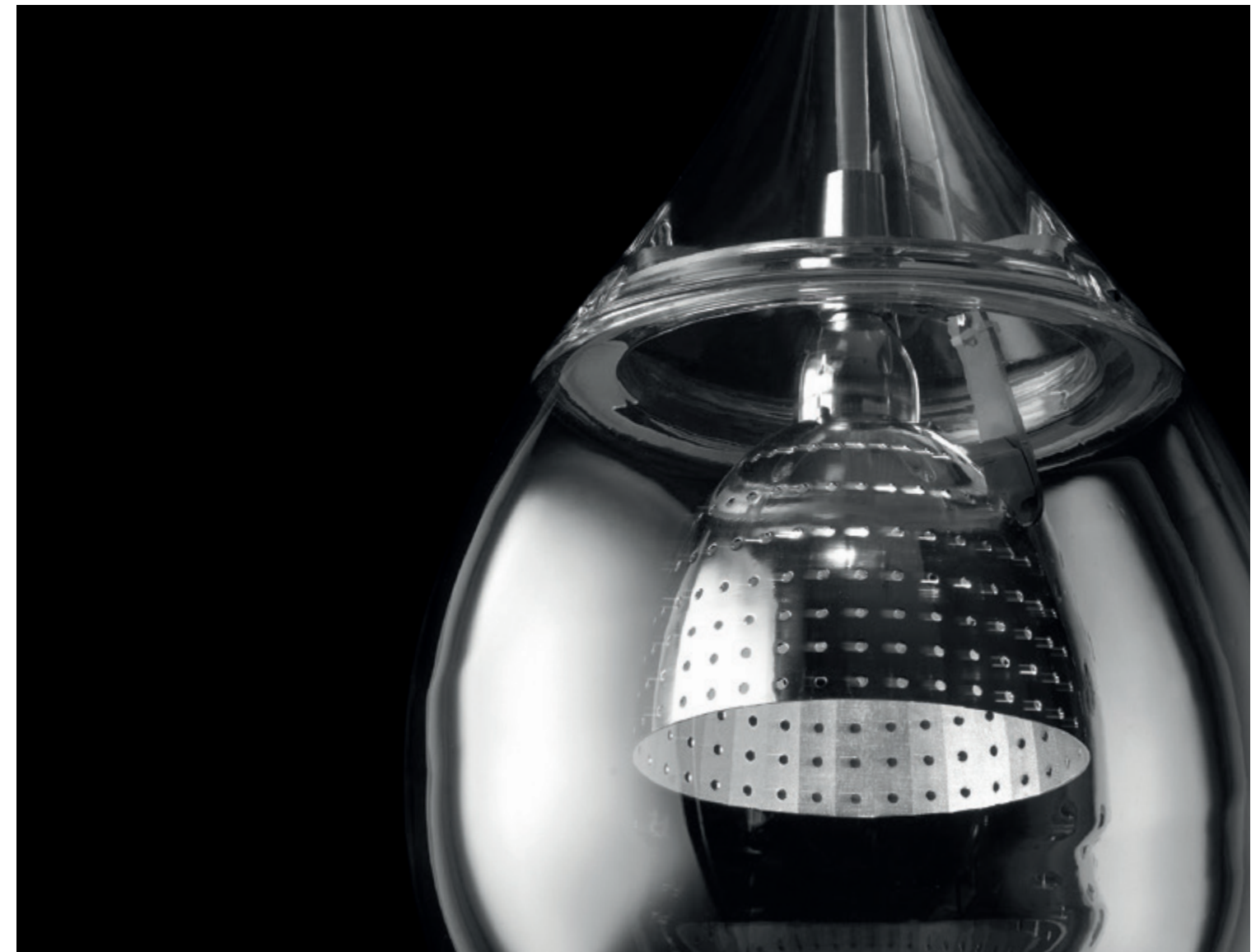
Slash 2 LED.

Elegant uninterrupted lines of light.

The Slash 2 profile light features an elegant aluminium profile, guarantees uninterrupted lines of light, and is extremely energy-efficient. To round off the range, Slash 2 is not only available with LED technology, but can also be equipped with specular louvres and sourced with T5 and T5 Seamless for application in offices.

up to
72lm/W

- uninterrupted lines of light
- shadow-free
- cuts power consumption by up to 40% through the combination of LEDs and the satinised diffuser with APD technology
- satinised APD (Added Performance Diffuser)

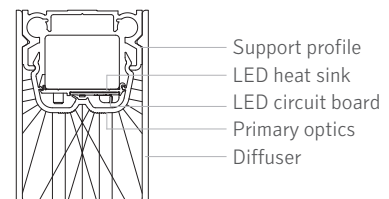


Flow LED.
Perfect uninterrupted lines of light.

102lm/W

Light has never been so beautiful – the new Flow LED luminaire features timeless design, minimalist formal language, and uniform light distribution across the diffuser thanks to cutting-edge SLA Technology* (Spread Light Applicator) developed by Regent. The result: perfect uninterrupted lines of light and significant energy savings.

SLA Technology* (Spread Light Applicator)



* Patent pending

- can be integrated well into the architectural space thanks to uniform light distribution across the diffuser using cutting-edge SLA Technology*
- high energy efficiency with luminaire efficiency of up to 102lm/W
- different versions, each with a specific luminaire light output, e.g. xHE (extreme High Efficiency) for circulation areas and corridors
- lower investment required thanks to the 2-part batten measuring 2.4 metres
- end caps without visible screws

Tea LED.
A droplet writes lighting history.

Designed
by Herzog & de
Meuron

The Tea pendant luminaire, developed with the renowned architecture firm Herzog & de Meuron, incorporates the perfect symbiosis of aesthetics and technology. This luminaire is especially effective when applied in spaces with high ceilings. Light is emitted upwards via an optical fibre. The power cable serves as a design element.

- design: Herzog & de Meuron Architects
- power cable serves as a design element



Echo LED.
And the best comes from above.

All good things supposedly come from above. This applies to the Echo LED luminaire in every regard. The new downlight from Regent is a true delight even before it is switched on. The extremely lightweight fixture can be installed in a matter of seconds – without tools. The harmonious luminance of the Echo LED is the result of the combination of the specially developed mixing chamber and the opal diffuser. The consequence: an energy-efficient lighting solution that provides pleasant, soft light that suits the needs of even the most sensitive eyes.

up to
103lm/W

- available in three sizes: 137/210/260 mm
- passive cooling, integral electronic ballast, ON/OFF or DALI-controlled
- glare-free light UGR <19, precise control of emitted light
- class II, IP20 from above, IP44 from below when mounted in closed ceilings (up to IP55 with accessories!)
- choice of optics to suit different applications
- Echo 210 PAL+ 2500K – 6500K, CRI 94



Echo Trimless LED.
For optimum integration.

The Echo Trimless LED is a highly practical solution: it not only blends in well with its surroundings, but is suitable for a wide variety of applications and achieves high efficiency ratings. Streamlined design and two sizes offer designers more scope for creativity. This highly efficient luminaire cuts costs and its intelligent construction reduces the time required for installation.

up to
96lm/W

- available in two sizes 137/210 with the same features as Echo LED
- trimless, streamlined design makes for perfect integration into ceiling architecture
- choice of optics to suit different applications
- high lumen output of up to 96lm/W



Rea LED.
High-performer.

The new range of Rea LED surface-mounted luminaires are impressive in all respects. They feature cutting-edge LED technology and are intelligently designed and built to guarantee excellent light quality, high energy efficiency and a long service life.

up to
2900lm

- energy-saving surface-mounted LED downlight in three versions 19, 26 and 38 W
- maintenance-friendly – L70 at 50.000h
- high luminaire light output of 1300/2000/2900lm
- alternative to conventional halogen spotlight up to 75 W or 1 x 26 W compact fluorescent lamp
- timeless, minimalist design in aluminium

Zeis LED.
Surprisingly pleasing to the eye and the wallet.

Zeis LED, a new recessed LED downlight, has a surprisingly high luminaire light output and features efficient passive cooling. But this is not all. The Zeis LED downlight is extremely simple to mount and flexible when it comes to lighting controls. Altogether a very convincing price-performance ratio.

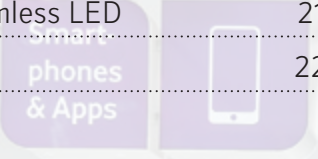
UGR <19

- powerful, energy-efficient recessed LED downlight
- maintenance-friendly trim
- high-quality workmanship
- supplied with cover glass
- maintenance-friendly – L70 at 50.000h
- alternative to conventional downlights equipped with 20W HIT or 1x32W CFL



Shop and Retail

Matrix LED	19
Kronos LED / Kronos Trimless LED	20
Kronos Power LED	21
Kronos Power Trimless LED	21
Mira LED	22



Flagship store in Cologne, Germany; Architects: Carsten A. Schubert, Schubert 2 Architects, Ratingen, Germany.



Matrix LED.
Perfect in design, technology and efficiency.

30% more efficient / + FOOD

If you are already positively impressed by its outward appearance, wait until you discover how it performs. The Matrix LED spotlight developed by Regent is now available with LED technology and therefore even more efficient, featuring fixed chromaticity coordinates for the optimum lighting of food. The Matrix LED spotlight is not only aesthetically appealing thanks to its clear geometrical forms and the fact that it delivers glare-free light and optimum illumination of the goods on display. Added to this are the practically boundless opportunities for adjusting the fixture to ensure optimum focussing.

- 30% more efficient
- with fixed FOOD chromaticity coordinates
- housing made of high-quality die-cast aluminium
- reflectors can be replaced without tools (Spot, Medium, Flood)
- tiltable: 45° from the horizontal / 45° to the rear / rotatable: 360°



Kronos LED / Kronos Trimless LED.
Best colour rendering and highest efficiency.

Alternative to
50W HAL

Kronos LED marks the beginning of a new era for gimbal-mounted modular recessed directional spotlights. The new generation features optimum colour rendering, high flexibility and significant cuts in maintenance costs. The perfect synthesis of design and technology delivers effective accent lighting to attract attention to your product displays. And the trimless version blends in perfectly with practically any interior architecture concept. Given its high efficiency ratings, the Kronos LED is an excellent energy-saving alternative to conventional 50W directional halogen spotlights.

- modular recessed LED directional spotlight, units with one, two or three spots
- gimbal-mounted
- rated lamp life L70 up to 50.000h
- available with or without trim
- CRI > 90
- energy-saving alternative to 50W HAL

Kronos Power LED / Kronos Power Trimless LED.
A self-contained highlight.

Alternative to
35 HIT

Kronos Power LED spotlights complete the Kronos LED range and are designed for applications where higher lumen packages are required. Take advantage of the flexibility this gimbal-mounted directional spotlight offers and cut operating costs thanks to reduced maintenance requirements and lower energy consumption. High-quality LED lighting for shop and retail applications as a direct alternative to high-intensity discharge lamp solutions.

- modular recessed LED directional spotlight, units with one, two or three spots
- choice of reflectors: Narrow Spot 12°, Spot 24° and Medium 36°, can be removed and replaced without tools
- gimbal-mounted through 30°
- rated lamp life L70 up to 50.000h
- available with or without trim
- CRI > 90

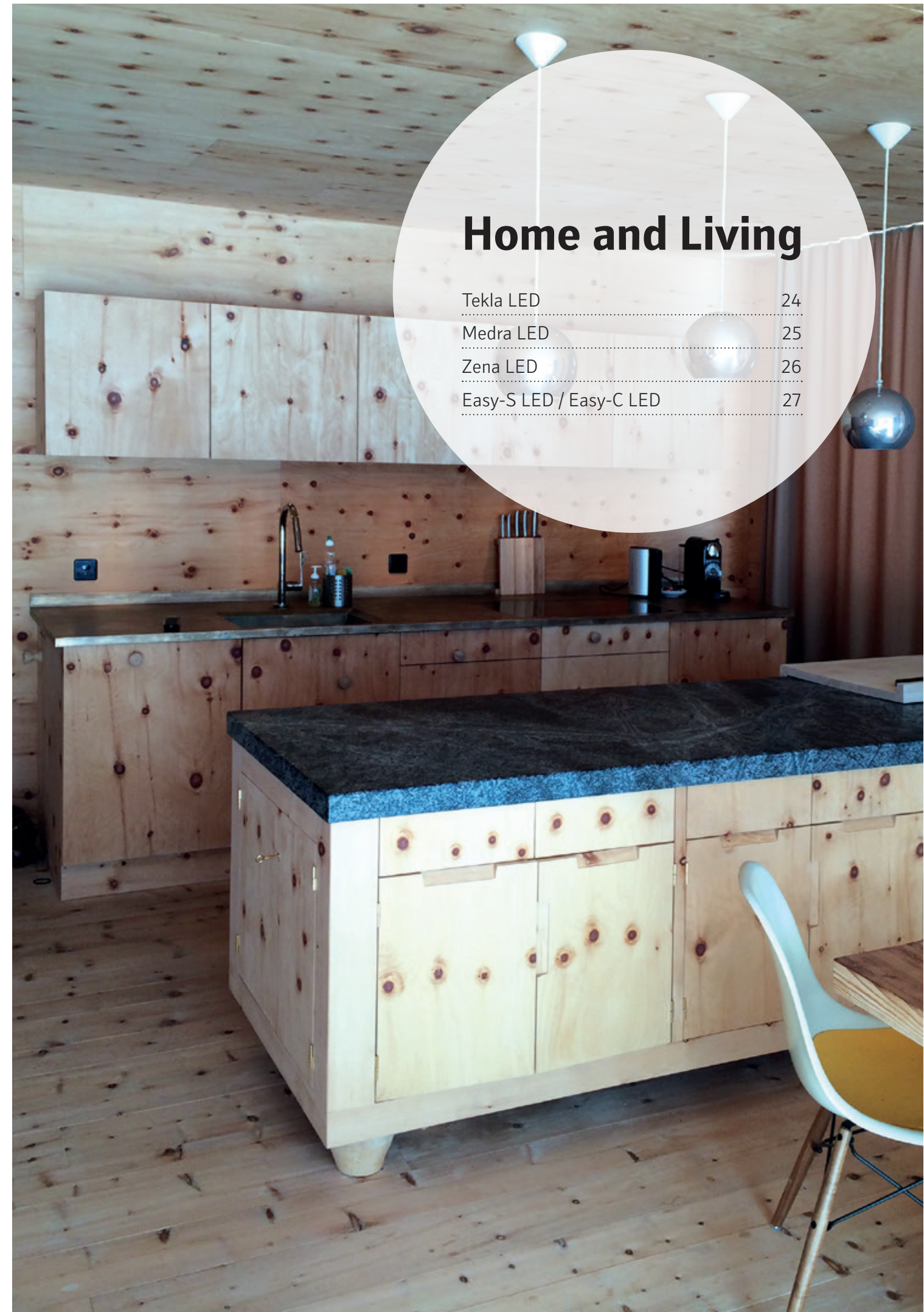


Mira LED.
Small but effective.

CRI > 90
950lm

The new Mira LED downlights provide a long-life, energy-saving alternative to conventional 50W halogen spotlights. Designed for installation in 68mm ceiling cut-outs, they feature excellent colour rendering properties CRI > 90 and a good price-performance ratio.

- attractively designed recessed LED downlight, light source set back slightly
- three different beam angles: 24°, 36°, 60°
- high lumen package of up to 950 lm
- high-quality workmanship
- maintenance-friendly – L70 at 50.000h
- designed for installation in 68 mm ceiling cut-outs
- CRI > 90



Home and Living

Tekla LED	24
Medra LED	25
Zena LED	26
Easy-S LED / Easy-C LED	27



Surface-mounted Tekla LED



Tekla LED, adjustable version



Tekla LED.

Design for every occasion.

Design meets technology. Given their purist design, and the fact that they are simple to install, the Tekla LED family of downlights can be easily integrated into existing architecture. The recessed versions are available in three different diameters and can be ordered as fixed or adjustable downlights. Two surface-mounted versions (round and square) complete the range. With their compact dimensions, cutting-edge LED technology and attractive price-performance ratio they make for a high-quality, energy-saving alternative to conventional halogen spotlights.

Energy-efficient,
simple to install

- fixed or adjustable versions
- recessed downlight, surface-mounted and recessed directional spotlight / surface-mounted round or square
- maintenance-friendly – L70 at 50.000h
- lumen package of up to 1100lm
- can be mounted quickly and easily thanks to the wide cover ring
- timeless, aesthetically pleasing design

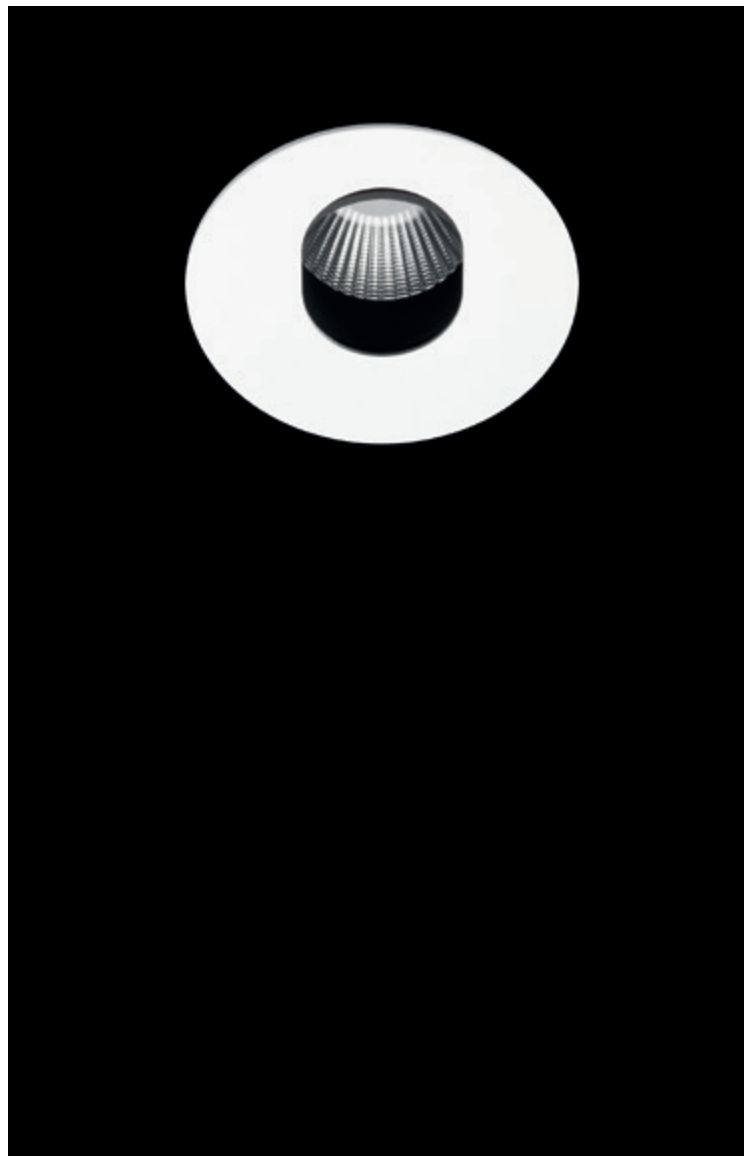
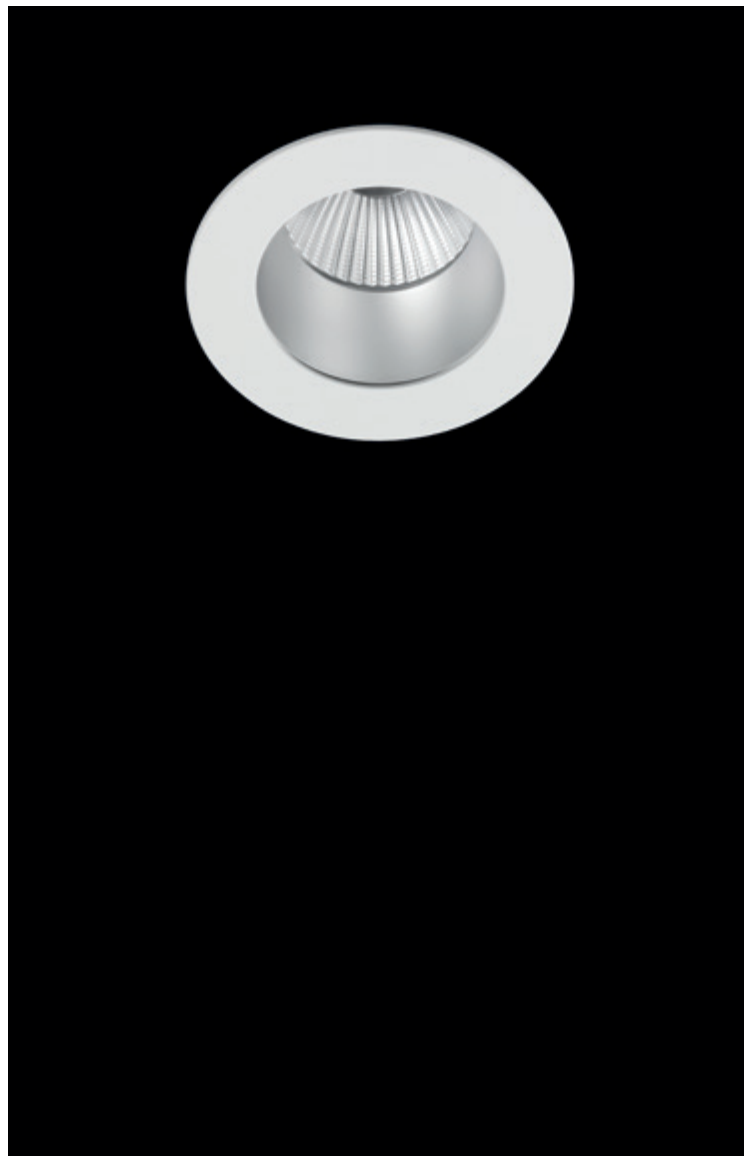
Medra LED.

You don't get flatter than this.

Slimline Medra recessed LED downlights from Regent can be applied in interiors where the space required for mounting conventional downlights is too limited. The absolutely uniform spread of light across the diffusers cut glare down to a minimum and generate a calm, consistent visual impression.

Recessed
depth < 60 mm

- family of recessed LED downlights in three different diameters
- maintenance-friendly – L70 at 50.000h
- high lumen package of up to 1550lm
- alternative to conventional 35 and 50W halogen spotlights or 1 x 18W compact fluorescent lamp



Zena LED.
Best light. Best colour.

CRI > 90,
up to 940lm

The new family of recessed LED downlights comes in five different versions. High lumen packages, excellent colour rendering and a choice of light-deflecting cover rings provide highest efficiency and light quality for general and accent lighting. High-quality workmanship and unadulterated design make this an attractive luminaire with a touch of class.

- five different versions
- for general lighting: fixed and adjustable versions
- for accent lighting: choice of 3 light-deflecting cover rings: open, closed and round, ellipsoidal
- alternative to conventional 50 and 75W halogen spotlights
- maintenance-friendly – L70 at 50.000h

Easy-S LED / Easy-C LED.
Efficient solution for ancillary spaces and circulation areas.

Energy-saving,
uniform
illumination

The new energy-efficient surface-mounted LED ceiling and wall luminaire is available in round or square versions. Meets a practically endless range of requirements thanks to the excellent uniform light it delivers and its high efficiency ratings.

- surface-mounted ceiling/wall luminaire, round or square versions
- maintenance-friendly – L70 at 50.000h

Industry

ICE LED	29
Splash LED	30



ICE LED.

The light worker among the industrial luminaires.

The ICE LED system batten luminaire is available for continuous row mounting for surface-mounting on ceilings and for pendant mounting. It combines high-quality design with sophisticated technology, ensuring uniform light distribution and high lumen packages to meet application requirements. The system is quick and easy to install: the pre-wired units are click-mounted one into the other. The user can define exactly where the luminaire unit is to be positioned, thus allowing the system to be installed effectively and according to where the electrical connections are placed.

up to
117lm/W

- high luminous efficacy of up to 117lm/W
- emits light in all directions
- uniform light distribution
- LED point sources not visible
- smooth surfaces make for high-quality design appeal
- easy to install given the click-mounting system and the flexible positioning of the luminaire
- also available as an individual luminaire



Splash LED.

Lots of light for little energy.

The moisture-proof luminaire Splash is a true highlight among the industrial luminaires. The choice of materials and light sources make this versatile fixture suitable for a wide range of applications. Four different mounting options make for high flexibility and clear visual lines. This tough fixture is even reliable when applied under especially adverse conditions. Sourced with LEDs, it is practically unbeatable: lumen packages to meet application requirements, uniform light distribution of 4000 to 5850lm and optimum efficiency (110lm/W).

up to
110lm/W

- high luminous efficacy of up to 110lm/W
- different beam angles: wide, narrow and asymmetrical
- uniform light distribution
- shatterproof PC version, impact-resistant PMMA/ABS version
- also available with T5/T8 lamps

Contacts

Hauptsitz Schweiz Regent Beleuchtungskörper AG, Dornacherstrasse 390, Postfach 139, CH-4018 Basel, Tel. +41 61 335 51 11, Fax +41 61 335 52 01, info.bs@regent.ch **Bern** Regent Beleuchtungskörper AG, Jupiterstrasse 15, Postfach 170, CH-3000 Bern 15, Tel. +41 31 940 10 10, Fax +41 31 940 10 11, info.be@regent.ch **Genève** Régent Appareils d'éclairage SA, Rue de Saint-Jean 30, CH-1203 Genève, Tél. +41 22 340 34 00, Fax +41 22 340 38 82, info.ge@regent.ch **Lausanne** Régent Appareils d'éclairage SA, Chemin du Rionzi 60, Case postale 432, CH-1052 Le Mont-sur-Lausanne, Tél. +41 21 642 02 02, Fax +41 21 648 21 19, info.ls@regent.ch **Lugano** Regent Illuminazione SA, Via al Mulino 22, CH-6814 Cadempino, Tel. +41 91 966 77 33, Fax +41 91 967 11 01, info.ti@regent.ch **Zürich** Regent Beleuchtungskörper AG, Luggwegstrasse 9, CH-8048 Zürich, Tel. +41 44 497 31 11, Fax +41 44 497 31 61, info.zh@regent.ch **Head Office International** Regent Beleuchtungskörper AG, Dornacherstrasse 390, P.O. Box 139, CH-4018 Basel Switzerland, Tel. +41 61 335 54 82, Fax +41 61 335 55 96, export.bs@regent.ch **Deutschland** Regent Licht GmbH, Plange Mühle 1, D-40221 Düsseldorf, Tel. +49 211 598 972 10, Fax +49 211 598 972 59, info@regent-licht.de **France** Régent Appareils d'éclairage Sàrl, Siège social 10, place Charles Béraudier, Immeuble l'Orient, F-69428 Lyon Cedex 03, Régent Appareils d'éclairage SA, Siège commercial, Dornacherstrasse 390, Case postale 139, CH-4018 Bâle Suisse, Tél. +41 61 335 54 83, Fax +41 61 335 55 96, info.fr@regent.ch **Israel** Regent Lighting Marketing Ltd., 4, Moshe Sharet St., IL-75704 Rishon Letzion, Phone +972 3 962 29 70, Fax +972 3 962 29 98, service@regentlighting.co.il **Italia** Regent Illuminazione s.r.l., Sede legale, Via Vittor Pisani 16, I-20124 Milano, Tel. +39 02 667 183 78, Fax +39 02 673 861 09, info.it@regent.ch **Österreich** Regent Licht GmbH, Karl-Farkas-Gasse 22, A-1030 Wien, Tel. +43 1 879 12 10, Fax +43 1 879 12 09, info@regent-licht.at **India** Regent Lighting Asia Private Limited, A-40, Ground Floor, Sector-80, Phase-II, Noida-201 305, Uttar Pradesh, India, Phone +91 120 473 3028 (North India) Phone +91 120 473 3031 (South & West India) info@regent-lighting.in

www.regent.ch



80.079.EN