



**95**  
lm/W

Leaves no wishes unfulfilled.  
The new Level.

The classic free-standing uplighter, entirely new: Level now also with CLD and LED.



LED

The Level product family allows Regent to provide solutions for the diverse requirements of modular office concepts. Now, Level, our most popular free-standing uplighter, with its proven design, can also be used as a pendant, ceiling & wall mounted luminaire. Thanks to the CLD and 100% LED, plus indirect and direct lighting, the particular lighting requirements in every office can be accommodated.

ARGUMENTS FOR
<ul style="list-style-type: none"> <li>• Visible light.</li> <li>• Increased direct light percentage with minimal energy requirement.</li> <li>• Stylish and contemporary design.</li> <li>• High efficiency.</li> <li>• Simple to operate.</li> <li>• Wall, ceiling mounted &amp; pendant luminaire, freestanding uplighter.</li> </ul>

FEATURES
<ul style="list-style-type: none"> <li>• Level freestanding uplighter for 28W compact-fluorescent lamps, or 100% LED.</li> <li>• Indirect / direct lighting, separately dimmable for LED lightsource.</li> <li>• Luminaire head rotatable by 350°.</li> <li>• With micro prismatic CLD Controlled Luminance Diffusor.</li> </ul>

INNOVATIONS
<ul style="list-style-type: none"> <li>• 100% LED.</li> <li>• CLD.</li> <li>• Visible light with controlled luminance.</li> <li>• SensoDim® with additional functionality (adjustable illumination time and threshold light level).</li> </ul>

LUMEN PER WATT
<ul style="list-style-type: none"> <li>• Level CLD LED 95 lm/W</li> </ul>





## Freestanding uplighter with CLD



LEVEL freestanding uplighter for 2 or 4 x 28W FSDH (TC-LEL) compact fluorescent lamps with 2GX11 lampholder, 230V, indirect/direct light emission, single or two part luminaire head, rotatable by 350°, aluminium profile frame, stove enamelled, micro prismatic CLD Controlled Luminance Diffusor, coated upright, stove enamelled transition profile and base plate, integrated electronic ballast, with head or pole mounted switch, 3m connecting cable with plug. Luminaire available in silver and white.

## Wall mounted luminaire with CLD



LEVEL wall mounted luminaire for 2 x 28W FSDH (TC-LEL) compact fluorescent lamps with 2GX11 lampholder, 230V, indirect/direct light emission, aluminium profile frame, stove enamelled in metallic silver, micro prismatic CLD Controlled Luminance Diffusor, metallic silver stove enamelled wall bracket, integrated electronic ballast.

## Ceiling mounted luminaire with CLD



LEVEL ceiling mounted luminaire for 1 / 2 x 28/54W or 35/49W FDH (T16) compact fluorescent lamps with G5 lampholder, 230V, indirect/direct light emission, aluminium profile frame, stove enamelled in metallic silver, micro prismatic CLD Controlled Luminance Diffusor, halogen free internal luminaire wiring, integrated electronic ballast.

## Pendant luminaire with CLD



LEVEL pendant luminaire for 1 / 2 x 28/54W or 35/49W FDH (T16) compact fluorescent lamps with G5 lampholder, 230V, indirect/direct light emission, aluminium profile frame, stove enamelled in metallic silver, micro prismatic CLD Controlled Luminance Diffusor, halogen free internal luminaire wiring, integrated electronic ballast, universal ceiling mounting system, sliding fixing wire suspension.

## All the options at a glance.



	CLD LED	CLD FSDH (TC-LEL)	CLD FDH T5 (T16)	MDT FSDH (TC-LEL)	MDT FDH T5 (T16)	CLD with pole mounted switch	MDT with pole mounted switch	SensoDim®
Free-standing uplighter	●	●		●		●	●	●
Desk lamp				●				●
Pendant luminaire			●	●	●			MDT ●
Ceiling mounted luminaire			●					
Wall mounted luminaire		●		●	●			MDT ●
System luminaire					●			MDT ●

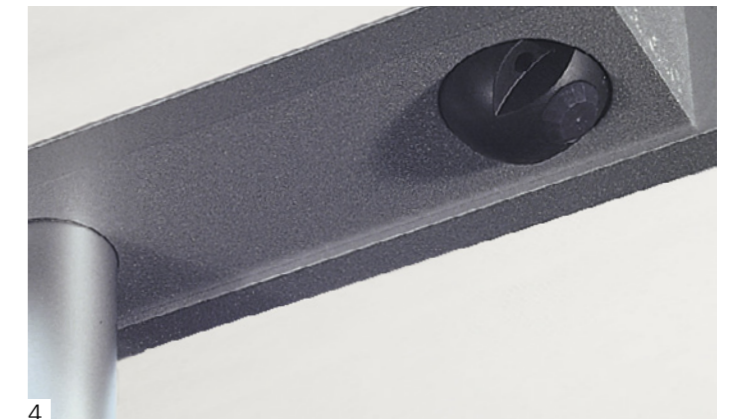
LED



## LED Freestanding uplighter with CLD



LEVEL freestanding uplighter with LED, neutral white, 1x 48W or 2x55W, 230V, indirect/direct light emission, single or two part luminaire head, rotatable by 350°, aluminium profile frame, stove enamelled, diffuser cover with opal enclosed micro prismatic CLD (Controlled Luminance Diffusor) optics, diffuser projecting by 8mm, coated upright, stove enamelled transition profile and base plate, integrated electronic ballast, with head or pole mounted switch, 3m connecting cable with plug. Luminaire available in silver and white.



- 1 Level LED
- 2 Actelion, Allschwil
- 3 Level CLD and LED with pole mounted switch
- 4 SensoDim®

**Switzerland**  
Head Office  
Regent Beleuchtungskörper AG  
Dornacherstrasse 390  
Postfach 246  
CH-4018 Basel  
Tel. +41 (0)61 335 51 11  
Fax +41 (0)61 335 52 01  
info.bs@regent.ch

**Berne**  
Regent Beleuchtungskörper AG  
Jupiterstrasse 15  
Postfach 35  
CH-3000 Bern 15  
Tel. 031 940 10 10  
Fax 031 940 10 11  
info.be@regent.ch

**Geneva**  
Régent Appareils d'éclairage SA  
Rue de Saint-Jean 30  
CH-1203 Genève  
Tél. 022 340 34 00  
Fax 022 340 38 82  
info.ge@regent.ch

**Lausanne**  
Régent Appareils d'éclairage SA  
Chemin du Rionzi 60  
Case postale 432  
CH-1052 Le Mont-sur-Lausanne  
Tél. 021 642 02 02  
Fax 021 648 21 19  
info.ls@regent.ch

**Lugano**  
Regent Illuminazione SA  
Via al Mulino 22  
CH-6814 Cadempino  
Tel. 091 966 77 33  
Fax 091 967 11 01  
info.ti@regent

**Zurich**  
Regent Beleuchtungskörper AG  
Luggwegstrasse 9  
CH-8048 Zürich  
Tel. 044 497 31 11  
Fax 044 497 31 61  
info.zh@regent.ch

**Head Office International**  
Regent Beleuchtungskörper AG  
Dornacherstrasse 390  
P.O. Box 246  
CH-4018 Basel Switzerland  
Tel. +41 61 335 54 82  
Fax +41 61 335 55 96  
export.bs@regent.ch

**Germany**  
Regent Licht GmbH  
TechnologiePark  
Friedrich-Ebert-Straße  
D-51429 Bergisch Gladbach  
Tel. +49 2204 84 37 80  
Fax +49 2204 84 37 81  
info@regent-licht.de

**France**  
Régent Appareils d'éclairage Sàrl  
Siège social  
10, place Charles Béraudier  
F-69428 Lyon Cedex 03

Régent Appareils d'éclairage SA  
Siège commercial  
Dornacherstrasse 390  
Case postale 246  
CH-4018 Bâle Suisse  
Tél. +41 61 335 54 83  
Fax +41 61 335 55 96  
info.fr@regent.ch

**Israel**  
Regent Lighting Ltd.  
4, Moshe Sharet St.  
IL-75704 Rishon Letzion  
Tel. +972 3 962 29 70  
Fax +972 3 962 29 98  
service@regentlighting.co.il

**Italy**  
Regent Illuminazione s.r.l.  
Sede legale  
Via Vittor Pisani 16  
I-20124 Milano

Regent Illuminazione SA  
Sede commerciale  
Via al Mulino 22  
CH-6814 Cadempino  
Tel. +41 91 966 77 33  
Fax +41 91 967 11 01  
info.it@regent.ch

**Austria**  
Regent Licht GmbH  
Karl-Farkas-Gasse 22  
A-1030 Wien  
Tel. +43 1 879 12 10  
Fax +43 1 879 12 09  
info@regent-licht.at

**United Kingdom**  
Regent Lighting UK Ltd.  
Legal address  
8 Lincoln's Inn Fields,  
UK-London, WC2A 3BP  
Tel. +44 7515 28 65 37  
Fax. +44 208 446 96 09  
info@regent-lighting.co.uk

**India**  
Regent Lighting Asia Private Limited  
A-40, Ground Floor,  
Sector-80, Phase-II,  
Noida-201 305, Uttar Pradesh, India  
Tel +91 120 473 3028 (North India)  
Tel +91 120 473 3031 (South & West India)  
info@regent-lighting.in